

THE  
**ULTIMATE**  
OUTBOARD MOTOR

# SUZUKI GENUINE MARINE PARTS AND ACCESSORIES

2021



Please read your Owner's Manual carefully. Remember, boating and alcohol or other drugs don't mix. Always wear a personal flotation device when boating. Please operate your outboard safely and responsibly.

Suzuki encourages you to operate your boat safely and with respect for the marine environment.

Specifications, appearances, equipment, colors, materials and other items of "SUZUKI" products shown in this catalogue are subject to change by manufacturers at any time without notice and they may vary depending on local conditions or requirements. Some models are not available in some territories. Each model might be discontinued without notice. Please enquire at your local dealer for details of any such changes. Actual body color might differ from the colors in this brochure.

**SUZUKI**  
**SUZUKI MOTOR CORPORATION**  
300 TAKATSUKA-CHO, MINAMI-KU, HAMAMATSU-SHI, SHIZUOKA 432-8611 JAPAN  
www.global.suzuki.com  
2021 SUZUKI GENUINE MARINE P&A  
99000-48G0-210

**SUZUKI**



Dear Customers,

Suzuki Outboards have been fascinating marine boaters and boatbuilders worldwide by their high quality, excellent performance and continuously innovative technology. We endeavor every single day to ensure you the DURABILITY - DEPENDABILITY - FLEXIBILITY of not only outboard engines, but also the Genuine Marine Parts and Accessories.

This catalogue provides you information about the highest quality Marine Parts & Accessories and all recommendations of how to integrate Accessories to your own outboard engine.

No matter what style you demand - classic simplicity or precise functionality - you'll find your best choice with our line-up of remote controls, gauges, our custom-engineered propeller and rigging kit, even optional instruments also match your expectations.

Please take your time reading through this catalogue. For Parts and Accessories order and installation, please contact your local Authorized Suzuki Marine Dealers for more details.

Happy Boating!

SUZUKI MOTOR CORPORATION



**THE ULTIMATE SATISFACTION BEYOND EXPECTATION**  
Comes along with  
**SUZUKI GENUINE MARINE PARTS AND ACCESSORIES**

**OPERATION SYSTEM**

Suzuki Multi-Function Display (SMD)	P6-15
Suzuki Multi-Function Gauge (SMG4)	P16-17
Diagnostic Mobile App	P18-19
Analogue Gauge	P20-21
Suzuki Precision Control (SPC)	P22-23
Mechanical Remote Control	P24-25
Switch Panels	P26-27
Keyless Start System	P28-29

**SUZUKI PROPELLERS**

WaterGrip	P32-33
Propeller Range	P35

**CARE AND MAINTENANCE ITEMS  
SUZUKI COLLECTION**

Genuine Oil & Chemical	P38-39
Suzuki Collection	P40-41

**UTILITY EQUIPMENT**

Utility Equipment	P44-45
Application Chart	P46-47



# OPERATION SYSTEM

## INTUITIVE AND USER-FRIENDLY SYSTEM

Our Genuine Suzuki Rigging Operation System is designed harmoniously to fit with every boat platform, guarantees you the best gratification ever.





# SUZUKI MULTI-FUNCTION DISPLAY (SMD)

## THE INTELLIGENT TECHNOLOGY COMES WITH BRILLIANTLY INTEGRATED DESIGN



## ULTIMATE CONNECTIVITY

Never compromise on quality and customer satisfaction - We endeavor every day to bring you reliable, high quality products with latest technology to accompany you on every voyage.

HERE!

You can find your most pleasurable boating experience with our SUZUKI MULTI-FUNCTION DISPLAY (SMD). SMD is designed to allow you to access to all your Suzuki engine information and other utility functions with a single touch!

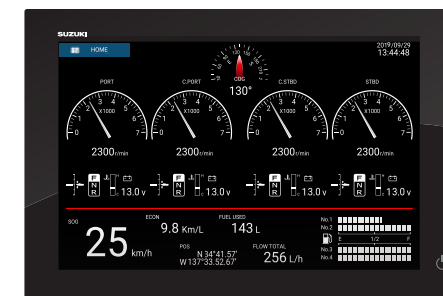
NOW!

Enjoy your true boating comfort with our SMD!



THE  
ULTIMATE  
OUTBOARD MOTOR

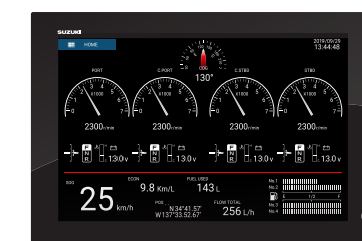
## PRODUCT LINE-UP



SMD16



SMD9



SMD12



SMD7

## KEY FEATURES

- ✓ Intuitive, easy, smooth operation with an entire multi touch screen interface. Total control at your fingertips
- ✓ Bonded all-glass LCD, sunlight viewable screen with impressive brightness, and a luxurious look
- ✓ Ease of operation with all Suzuki engine information integrated on one display
- ✓ All latest and unique technologies such as TruEcho Chirp™, Accu-Fish™, RezBoost™ combined in one display provide you the most exciting fishing experience\*

\* Requires FURUNO transducer to utilize the built-in fish finder. Please contact your nearest FURUNO dealers for further information.

## WHAT'S NEW!

### SUZUKI GENUINE FUEL TANK ADAPTER

The genuine fuel tank adapter is designed to be compatible with SMD



APPLICABLE MODELS : DF9.9B-DF350A

## FEATURES

- ✓ Possible to connect to 4 tank senders
- ✓ Initial configuration is available on SMD
- ✓ Fuel tank senders are compatible with 3 specifications: EU, ABYC, and Custom

Operation System: SUZUKI MULTI-FUNCTION DISPLAY (SMD)

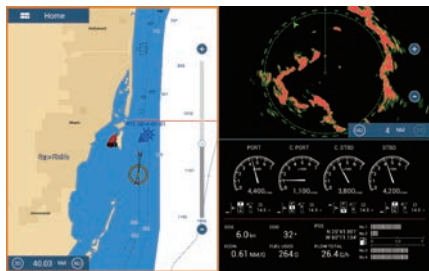


# CUSTOMISING YOUR DISPLAY

## SMD16 & SMD12



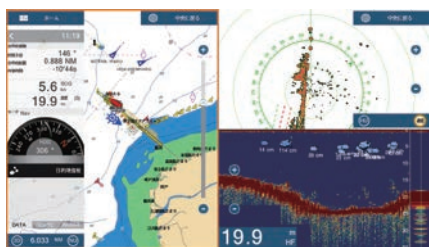
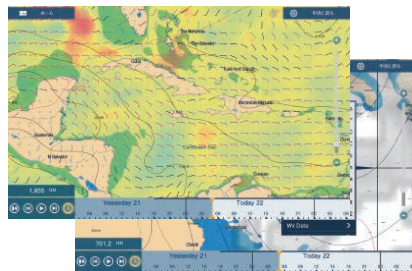
Design Your Own Screen



Suzuki Engine Interface

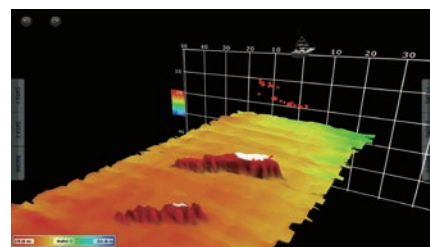


Marine Weather Forecast



Integrated FISH-FINDER\*

\* Requires FURUNO transducer to utilize this feature. Please contact to local FURUNO Dealers for more details.

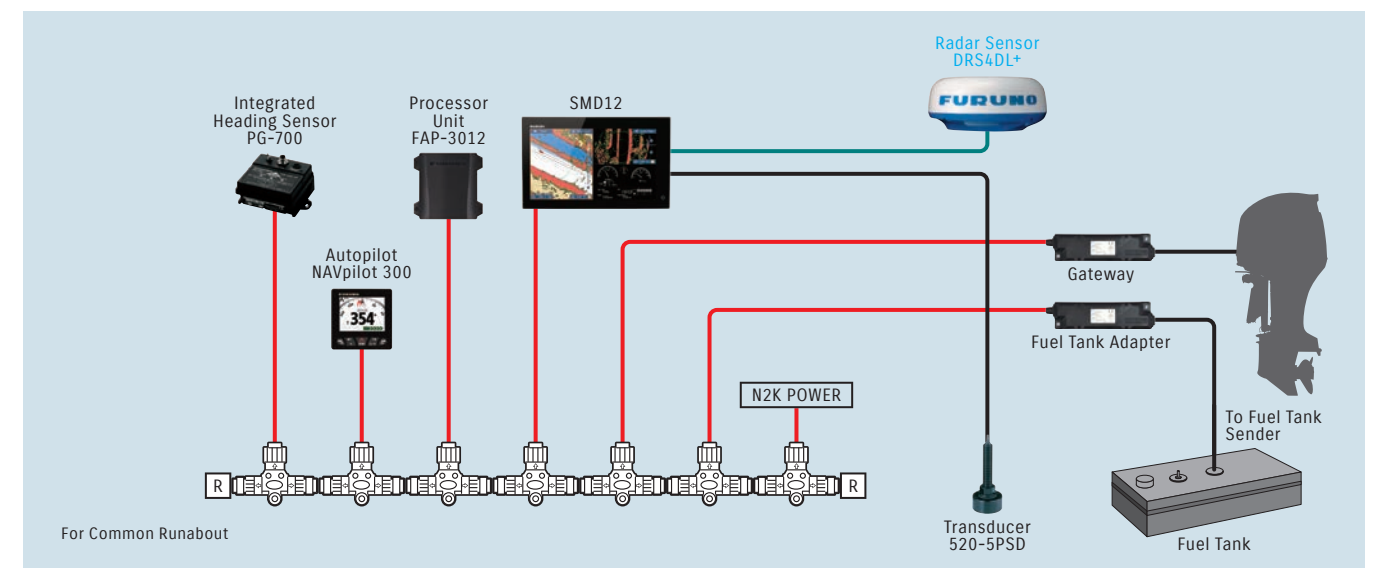
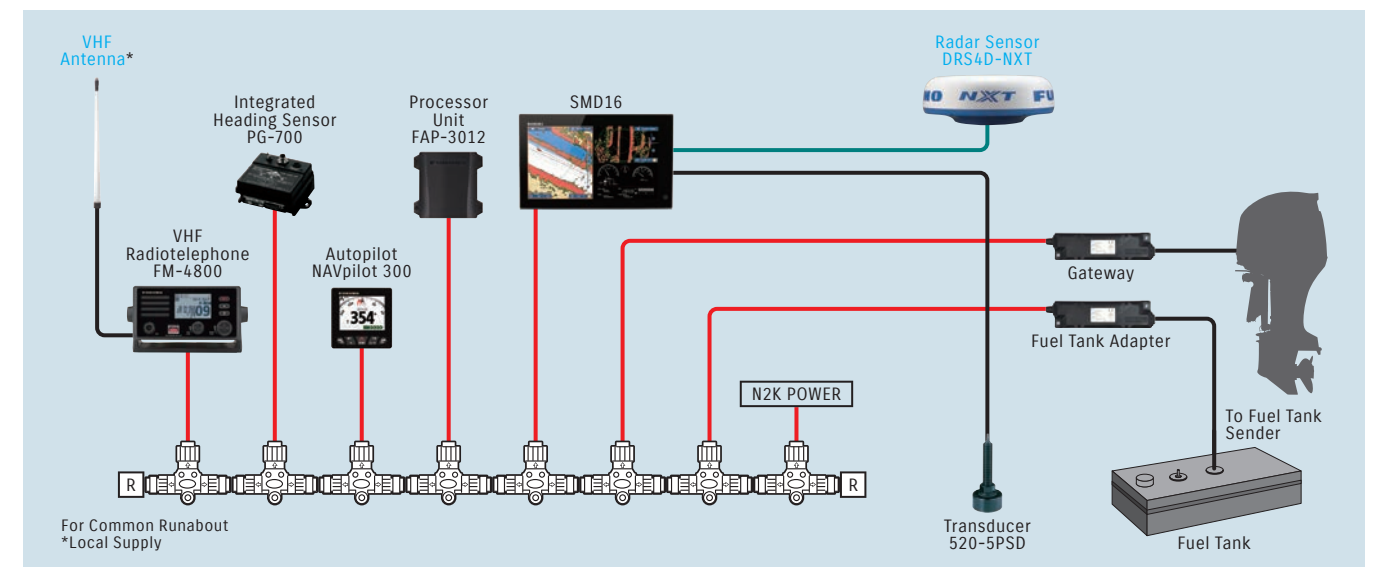
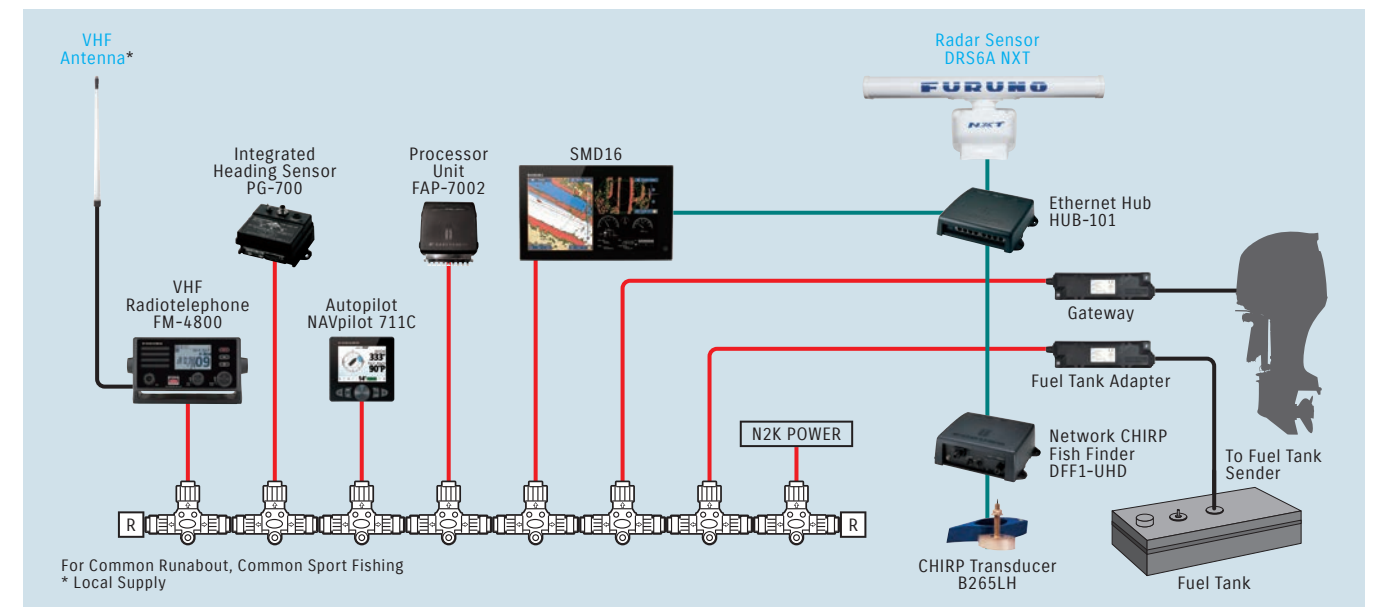


Multi Beam Sonar\*

## SMD NETWORK RECOMMENDATIONS

Product suggestion only - Not an installation diagram. Please contact your local Authorized Suzuki Dealers for more details.

— NMEA2000 — Ethernet — Other — NMEA2000 T Connector

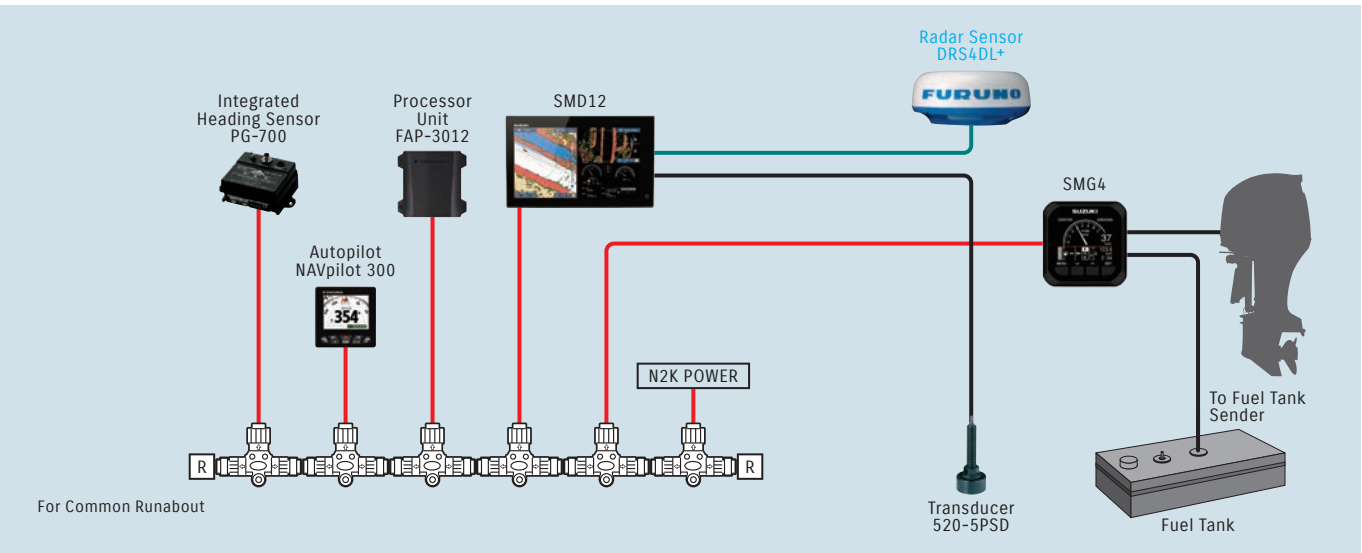
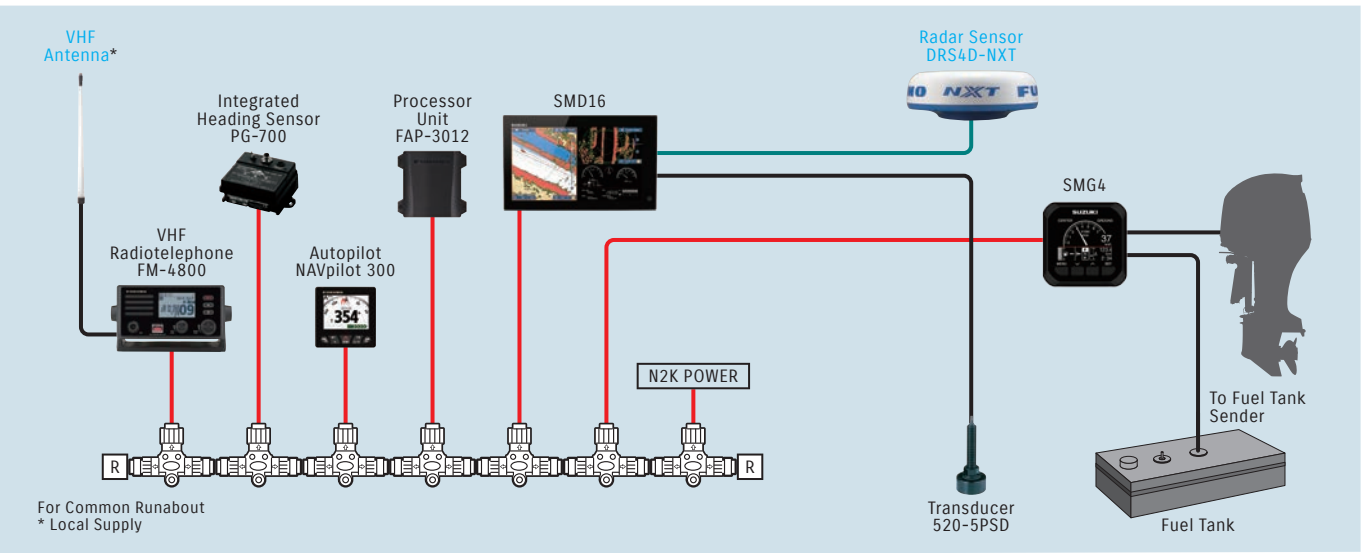




## SMD NETWORK RECOMMENDATION In case of installing SMG4

Product suggestion only - Not an installation diagram. Please contact your local Authorized Suzuki Dealers for more details.

— NMEA2000 — Ethernet — Other — NMEA2000 T Connector



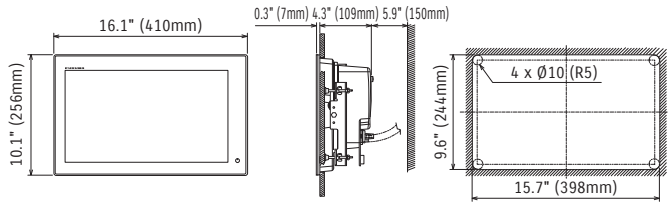
## SMD16 AND SMD12 SPECIFICATIONS

MULTI-FUNCTION DISPLAY		SMD16	SMD12
DISPLAY UNIT			
Type		Color TFT multi touch LCD	
Screen Size		15.6" (396.2mm) Wide	12.1" (307.3mm) Wide
Screen Resolution		FWXGA 1366 x 768 pixels	WXGA 1280 x 800 pixels
Screen Brightness		1000 cd/m² (typical)	1300 cd/m² (typical)
Language		Chinese (simplified Chinese Characters), Danish, English (US & UK), Finnish, French, German, Greek, Italian, Japanese, Norwegian, Portuguese, Russian, Spanish, Swedish	
Display Modes		GPS/WAAS/RADAR: Course plot, NAV data, Radar Chart Overlay, Head-up, North-up (heading data required), Fish Finder: ACCU-FISH™, A-scope, Auto (Fishing/ Cruising), Bottom Discrimination, Others: Weather Forecast, Digital switching, Marine Audio	
Memory Capacity		30,000 user points, 30,000 points for ship's tracks, 200 planned routes (500 points per route)	
GPS/WAAS			
Receiver Type	GPS	56 channels	
	SBAS	1 channel (C/A mode, WAAS)	
Receiving Frequency		L1 (1575.42 MHz)	
Time to First FIX		100 s (cold start)	
Tracking Velocity		999 kn	
SBAS		WAAS, EGNOS, MSAS	
ACCURACY			
Internal Antenna	GPS	10 m Max	
	WAAS	3 m Max	
	MSAS	7 m Max	
CHART PLOTTER			
Cartography		MapMedia mm3d chart (C-MAP/Navionics/NOAA)	
Alarms		Anchor Watch, XTE, Proximity, Depth, Temperature, Speed, etc.	
RADAR			
Display Modes		Head-up, North-up* *Heading input required.	
Target Tracking**		30 Targets* *Heading input required.	
FISH FINDER (Built-in)			
Transmit Frequency		50/200 kHz	
Transducer		600 W or 1 kW* *Matching Box MB-1100 required for some specific FURUNO transducers	
Modes		RezBoost™, ACCU-FISH™, Bottom Discrimination, A-Scope, Auto (Fishing/Cruising), Manual, Bottom Zoom, Bottom Lock	
INTERFACE			
NMEA2000		1 Port	
Interface NMEA2000	Input	059392, 059904, 061184, 060928, 065280, 126208, 126720, 126992/996, 127237/245/250/251/257/258/488/489/505, 128259/267, 129025/026/029/033/038/039/040/041/291/538/540, 129793/794/798/808/809/810, 130306/310/311/312/313/314/316/577/578/817/818/820/822/823/826/827/828/880	
	Output	126992/127250/127251/127257/127258/128259/128267/128275/129025/129026/129029/129033/129283/129284/129285/130306/130310/130312/130313/130314/130316	
NMEA0183		1 Integrated Output Port	
Interface (NMEA0183)		AAM, APB, BOD, DBT, DPT, GGA, GLL, GNS, GSA, GSV, RMB, RMC, RTE, TLL, TTM, VTG, WPL, XTE, ZDA	
LAN		1 Port (100BASE-TX)	
USB		1 Port (USB2.0)	
Video Output		1 Port (HDMI)	
Video Input		2 Ports (NTSC/PAL)	
AUX I/O		1 Port (External Event/MOB Input/Operator Fitness/Alarm Output)	
SD Card Slot		1 Slot (Micro SDXC, rear), 2 Slots Card Unit (optional)	
Wireless LAN		IEEE802.11b/g/n, Transmit frequency: 2.4 GHz band	
ENVIRONMENT			
Temperature (IEC60945)		-15°C to +55°C	
Waterproofing		IP56	
POWER			
		12-24 VDC	
		3.6-1.8 A	3.0-1.5 A

\*\* Not available with DRS4DL

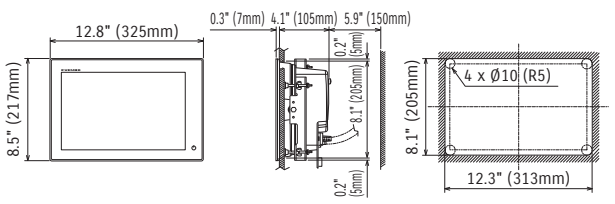
### SMD16 Display Unit

10.6lb (4.9kg)



### SMD12 Display Unit

8.2lb (3.7kg)







# CUSTOMISING YOUR DISPLAY SMD9 & SMD7

## Design Your Own Screen

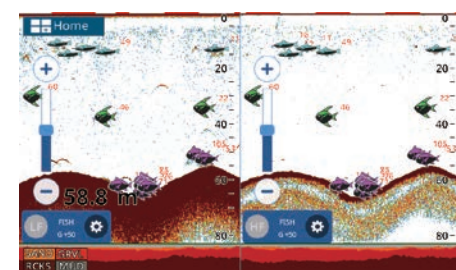


## Suzuki Engine Interface



## Detailed Chart With C-MAP 4D Compatibility

\* Requires FURUNO transducer to utilize this feature. Please contact to local FURUNO Dealers for more details.

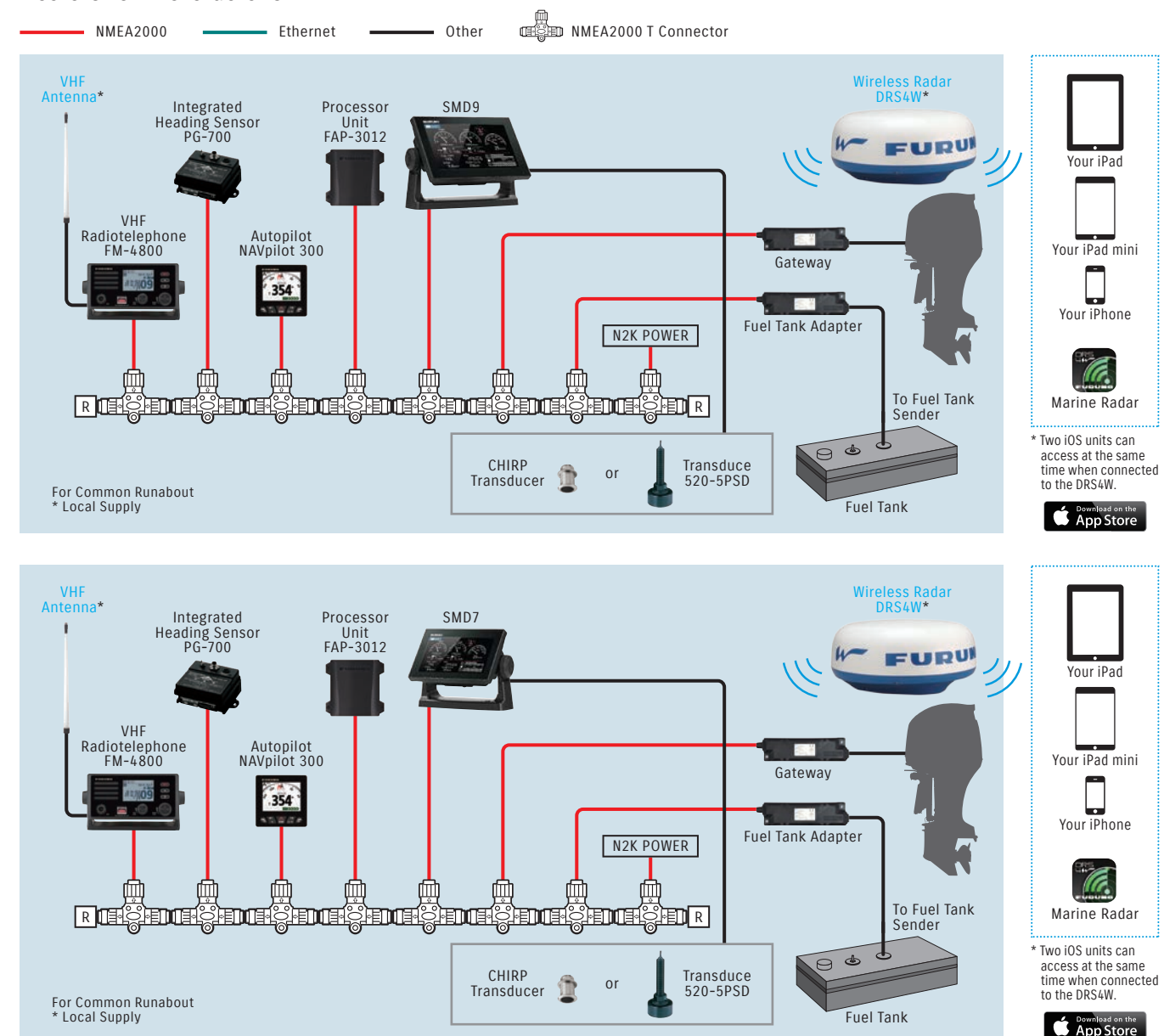


## Advanced Reliable Fishing Partner-FISH FINDER\*



## SMD NETWORK RECOMMENDATIONS

Product suggestion only - Not an installation diagram. Please contact your local Authorized Suzuki Dealers for more details.

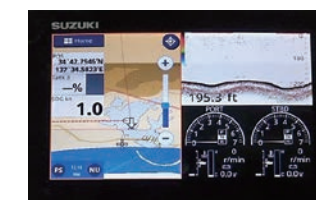


## WHAT'S NEW!

### NEW WIRELESS SOLUTION - MIRROR CONTROL APP TWO-WAY COMMUNICATION!

Combination with iOS/Android device increases the controllable station via Wireless LAN

The following App supports the mirror control of SMD7/9 over an iOS/Android device



App : Mirror Control (free of charge)  
Seller : AvMap srl

For iOS  
(App Store)



For Android  
(Google Play)



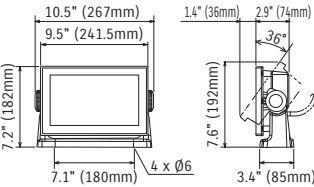


SMD9 AND SMD7 SPECIFICATIONS

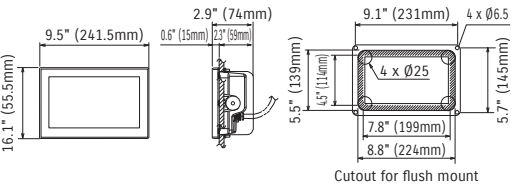
MULTI-FUNCTION DISPLAY		SMD9	SMD7
DISPLAY UNIT			
Type	Color TFT Multi Touch LCD		
Screen Size	9"(228.6mm) Wide		7"(117.8mm) Wide
Screen Resolution	WVGA 800 x 480 pixels		
Screen Brightness	1000 cd/m <sup>2</sup> (typical)		
Language	English (US & UK), Russian, Bulgarian, French, Spanish, German, Italian, Portuguese, Danish, Swedish, Norwegian, Finnish, Greek, Japanese		
Display Modes	Chart Plotter, Fish Finder, Radar*1, AIS*2, Instruments*3 (Nav Data, Engine, Wind, Fuel tank, Autopilot*, etc.), GPS status, Weather Forecast *1: Connection to the 1st Watch Wireless Radar DR54W required *2: Connection to AIS sensor required *3: Connection to external sensors required *4: Connection to the FURUNO NAVPilot-300 required		
Memory Capacity	30,000 points for ship's track and waypoints 1,000 planned routes (Max. 50 points per route) 5,000 quickpoints		
GPS/WAAS			
Receiver Type	GPS	72 channels	
	SBAS	1 channel (C/A mode, WAAS)	
Receiving Frequency	L1 (1575.42 MHz)		
Time to First FIX	100 s (cold start)		
Tracking Velocity	999 kn		
SBAS	WAAS, EGNOS, MSAS		
ACCURACY			
Internal Antenna	GPS	10 m Max	
	WAAS	5 m Max	
	MSAS	7.5 m Max	
CHART PLOTTER			
Cartography	C-MAP 4D		
Alarms	Anchor, Depth, Arrival, Speed, Trip, Temperature, etc		
RADAR			
Display Modes	Head-up, North-up* *Heading input required.		
FISH FINDER (Built-in)			
Transmit Frequency	CW: 50/200 kHz, CHIRP: 40 to 225 kHz		
Transducer	300 W or 600 W or 1 kW* (Transducer dependent) *Matching Box MB-1100 required for some specific FURUNO transducers		
Modes	TrueEcho CHIRP™, RezBoost™, ACCU-FISH™, Bottom Discrimination**, Auto gain (Fishing/Cruising), Manual gain, A-Scope, Marker Zoom, Bottom Zoom, Bottom Lock* CHIRP dedicated transducer required. ** Dual frequency compatible transducer required.		
INTERFACE			
NMEA2000	1 Port		
Interface NMEA2000	Input	126992, 127245/250/251/258/489/493/497/505, 128259/267/275, 129025/026/029/038/039/040/041/285/538/540, 129793/794/798/808/809/810, 130306/310/311/312/313/314/316, 130577/830/831/832/880	
	Output	126992, 127245/250/251/257/258/505, 128259/267/275, 129025/026/029/033/283/284/285, 130310/312/316/830/831/832	
NMEA0183	1 Port		
Interface (NMEA0183)	Output	AAM, APB, BOD, BWR, DBT, DPT, GGA, GLL, GNS, GSA, GSV, GTD, HDG, HDT, MTW, MWV, RMA, RMB, RMC, RTE, THS, TLL, VHW, VTG, WPL, XTE, ZDA, PFEC (SDmrk/SDtbd/SDtfl/pidat)	
SD Card Slot	2 Slots, up to 32 GB (SD, SDHC Supported)		
Wireless LAN	IEEE 802.11 b/g/n		
ENVIRONMENT			
Temperature (IEC60945)	-15°C to +55°C		
Waterproofing	IP56		
POWER			
	12-24 VDC		
	1.0-0.5 A		

SMD9 Display Unit

(Bracket Mount) 3.3lb (1.5kg)

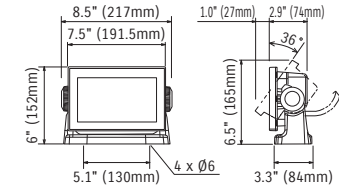


(Flush Mount) 2.9lb (1.3kg)

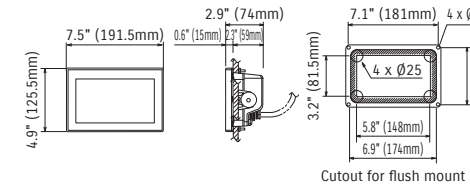


SMD7 Display Unit

(Bracket Mount) 2.4lb (1.1kg)



(Flush Mount) 2.0lb (0.9kg)



THE  
ULTIMATE  
OUTBOARD MOTOR



Operation System: SUZUKI MULTI-FUNCTION DISPLAY (SMD)





# SUZUKI MULTI-FUNCTION GAUGE (SMG4)

## ALL INFORMATION IN ONE PLACE

When you are in the water, it is vital to acquire the information of engine performance and condition whenever you need. That's exactly the thinking behind our SMG4 - All you need for effortless and relaxing boating in one simple, reassuring and reliable device.



THE  
ULTIMATE  
OUTBOARD MOTOR

### PRODUCT LINE-UP

#### ANALOGUE TACHO & SPEED MODE



#### DIGITAL TACHO & SPEED MODE



#### ANALOGUE SPEED MODE (NIGHT)



#### DIGITAL TACHO MODE (NIGHT)



#### ANALOGUE TACHO MODE



#### FUEL MODE



#### TROLL MODEL FUNCTION\*

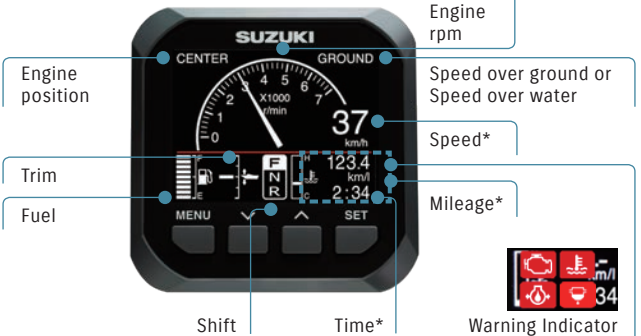


You can operate your Multi - Function Gauge in either digital or analogue display mode, depending on your preference. You can also zoom in on any individual elements of the display, making it even more clear to read. No matter what situation, the DAY and NIGHT settings are available to use flexibly.

\* Troll Mode Function allows you to control troll mode from the SMG4. This function is available from 2019 year models and can be only used by models which adapted troll model.

### KEY FEATURES

#### ANALOGUE TACHO & SPEED MODE



#### TACHO MODE



- ✓ Viewing a wide range of information, including engine rpm, speed and trim angle, as well as engine temp, fuel economy in 13 different units, and total fuel flow for multiple engine installations
- ✓ Automatically receiving alerts from the engine's sensors and warning systems

	GPS Module	Speed sensor
Speed	✓	✓(SOW)
Mileage	✓	✓(SOW)
Trip distance	✓	✓(SOW)
Time	✓	N/A

\* Speed sensor or GPS module will be required to display Speed, Mileage, Trip distance, Time information.  
(SOW): Speed over water





## DIAGNOSTIC MOBILE APP

### ADVANCED SERVICE TOOL

SDS Mobile works in tandem with our Multi-Function Gauge and Multi-Function Display.

Simply download the App, which is available on iOS and Android to your smartphone: you don't need a separate device.

When you email your data scanned from QR code, the dealer will be supplied of information including engine number, number of hours since the last oil change, total hours of operation at different rpm, and technical information.

\*DENSO WEB owns the right of name and logo of QR code.



#### DOWNLOAD THE APP FROM:



Apple and the Apple logo are trademarks of Apple Inc., registered in the U.S. and other countries. App Store is a service mark of Apple Inc., registered in the U.S. and other countries.



Google Play and the Google Play logo are trademarks of Google LLC.

SDS Mobile App and email service is entirely free of charge.



## HOW IT WORKS

1. The Outboard sends engine data and converts it into a QR code displayed on the Multi-Function Gauge or Multi-Function Display.
2. With the SDS Mobile App, you can then scan the QR code on the Multi-Function Gauge or Multi-Function Display with your phone. The engine data will be stored on your smart phone.
3. You can then send the engine data via email to your Suzuki Dealer.





# ANALOGUE GAUGE

## CLASSIC DESIGN NEVER GO OUT OF STYLE



At Suzuki, we understand that everyone enjoys boating in their own unique way. Some may prefer the latest digital instruments, some may prefer classical style. Our Suzuki Analogue Gauges are designed to fit individual needs.

THE  
**ULTIMATE**  
OUTBOARD MOTOR

### PRODUCT LINE-UP

#### TACHOMETER

Our full-scale tachometers indicate engine revs up to 7000 rpm, with options including caution lamp and troll mode.



White  
DF40A-200A



Black  
DF40A-200A

#### TRIM GAUGE

Magnetic-type gauge shows trim angle for optimum performance and efficiency.



White  
DF25A-DF250



Black  
DF25A-DF250

#### HOURLY METER

Powered by a 12-volt electric motor, this meter shows how many hours' operation your outboard has completed, so you can tell precisely when routine maintenance and service are required.



White  
DF8A-DF250 DT30/40



Black  
DF8A-DF250 DT30/40

#### WATER-PRESSURE GAUGE

Bourdon-tube type gauge measures cooling-water pressure.



White  
DF40A-DF250



Black  
DF40A-DF250

#### FUEL GAUGE

Simple and easy to read on the water.



White  
DF8A-DF250



Black  
DF8A-DF250

#### VOLT METER

Monitors the charging system to help keep your outboard motor running at its best.



White  
DF8A-DF250 DT30/40



Black  
DF8A-DF250 DT30/40

#### SPEEDOMETER

Bourdon-tube type speedometer with readings in km/h and knots.



White



Black

Line Up: 80-130km/h  
50-80 mph  
45-60 knots



# SUZUKI PRECISION CONTROL (SPC)

## OUR SOPHISTICATED DRIVE-BY-WIRE SYSTEM

Suzuki Precision Control (SPC) uses our most advanced technology to give you precise, effortless control for truly relaxing and enjoyable boating experience. While conventional control systems use mechanical cables to activate the throttle, with Suzuki Precision Control, a computer sends signals to the engine electronically by wire, reduce friction and making shifting easier and smoother. Plus, the system processes and transmits commands in real time to actuators in the engine, delivering precise, instant throttle responses for greater control and accuracy. It also has built-in features to help protect the engine from damage, so you can enjoy your boating life to the full.

THE  
**ULTIMATE**  
OUTBOARD MOTOR

### PRODUCT LINE-UP

**BINNACLE-MOUNT  
REMOTE CONTROL BOX**



**BINNACLE-MOUNT  
REMOTE CONTROL BOX**

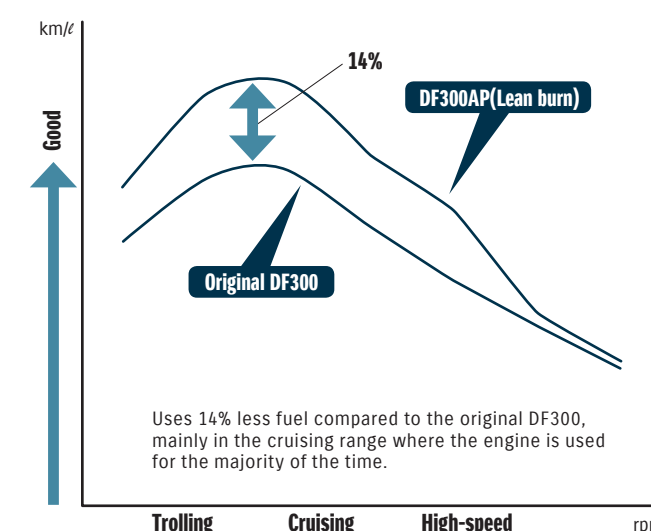


**FLUSH-MOUNT  
REMOTE CONTROL BOX**



### KEY FEATURES

- ✓ Drive-by-wire technology delivers smoother, more positive control
- ✓ Operational force is transmitted effortlessly and instantly when required
- ✓ Works seamlessly with Suzuki's Lean Burn Technology to deliver remarkable fuel economy over a wide operating range
- ✓ The system can be configured with single, twin, triple even quadruple engine and for dual station installation



Uses 14% less fuel compared to the original DF300, mainly in the cruising range where the engine is used for the majority of the time.

\* Results vary depending upon operating conditions

### LEAN BURN TECHNOLOGY

Fuel efficiency matters whether you're boating for pleasure or commercial purpose. Our Lean Burn Technology combined with Suzuki Precision Control, delivers an adequate fuel/air mixture to the engine. The system is designed to save fuel both at low speed and up into the cruising range.



# MECHANICAL REMOTE CONTROL

## A FRESH OUTLOOK FOR CONVENTIONAL SYSTEM ALWAYS KEEPING THE BOAT CRUISING ALONG



For reliable, easy boat control that you desire, we are pleased to offer a wide range of Mechanical Remote Control Boxes. Simple design but carrying fully essential functions that you can count on in whatever conditions.

THE  
**ULTIMATE**  
OUTBOARD MOTOR

### PRODUCT LINE-UP

#### BINNACLE-MOUNT REMOTE CONTROL BOX



DF8A - DF250



DF8A - DF250

#### FLUSH-MOUNT REMOTE CONTROL BOX



DF8A - DF250

#### SIDE-MOUNT REMOTE CONTROL BOX



DF4A-DF250

### KEY FEATURES

- ✓ Unique chamfer grip is elegant and eye-catching
- ✓ Intergrated design matches Multi-Function Gauges to give your console a harmonious view
- ✓ Lever has been fully ergonomically tested for most hand sizes
- ✓ Shifting is effortless and positive



# SWITCH PANELS

## FOR SUZUKI PRECISION CONTROL AND MECHANICAL REMOTE CONTROL SYSTEM



In our constant pursuit of easier handling and improved convenience we offer a range of panels and options for your Suzuki Remote Control System.

### PRODUCT LINE-UP For Suzuki Precision Control System

**MAIN SWITCH PANEL**  
(SINGLE IGNITION WITH EMERGENCY-STOP SWITCH)



**CONTROL PANEL**  
(FOR DUAL ENGINE AND FOR QUADRUPLE ENGINE)



**CONTROL PANEL**  
(FOR SINGLE ENGINE)



**CONTROL PANEL**  
(FOR TRIPLE ENGINE)



### PRODUCT LINE-UP For Suzuki Mechanical Control System

**IGNITION SWITCH PANEL**  
(SINGLE IGNITION WITH EMERGENCY-STOP SWITCH)



**EMERGENCY SWITCH PANEL**



**IGNITION SWITCH PANEL**  
(DUAL IGNITION WITH EMERGENCY-STOP SWITCH)



**PTT SWITCH PANEL**



**IGNITION SWITCH PANEL SINGLE IGNITION**



**LIGHTING SWITCH PANEL**



### KEY FEATURES

These panels are designed to bring all the controls for your outboards together whether you have a single rig or multiple outboards. Ergonomic buttons make it easy to start and stop your engine at the push of a button and control trim and tilt with ease. Multiple outboards can simply be synchronised for control from one set of buttons.

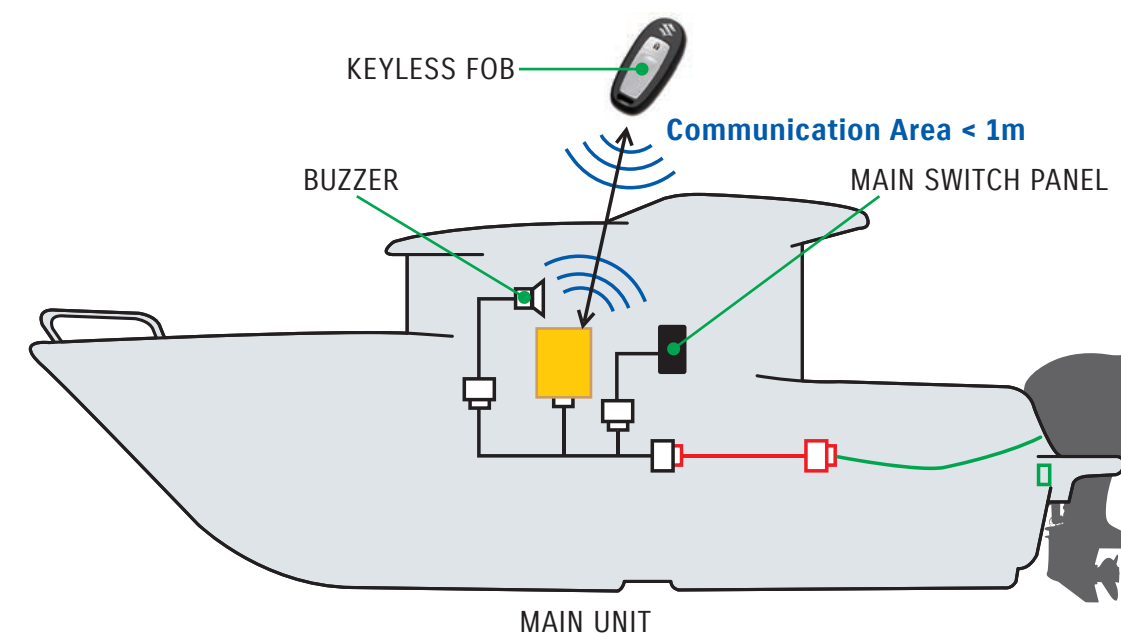


# KEYLESS START SYSTEM

## WORLD-FIRST OUTBOARD TECHNOLOGY



THE  
**ULTIMATE**  
OUTBOARD MOTOR



Find out more by  
watching our videos

The system works by transmitting a unique access code from the keyless fob to the engine's starting system. Without the keyless fob, the engine won't start, making it a completely effective theft deterrent. And for total peace of mind, we've even designed the keyless fob to float, so if you're unlucky enough to drop it overboard, you can easily retrieve it.



### HIGH SECURITY

Suzuki original engine starting system features an immobilizer function for added peace of mind. IC access codes installed in the keyless fob and engine must match for the engine to start. This prevents starting the engine with the wrong key making the system a good theft deterrent as well.

### EASY OPERATION

Suzuki original engine starting system offers a variety of functions. The keyless fob is easy to carry and all you need to enjoy stress-free engine start for greater boating pleasure. One step ahead of the competition, the Suzuki Keyless Start System requires no mechanical key so the keyless fob remains safely in your pocket.

### WATERPROOF FLOAT KEYLESS FOB

The easy to carry keyless fob remains safely in your pocket reducing risk of a lost key. The keyless fob is waterproof and floats so should it ever go overboard it is retrievable.





# SUZUKI PROPELLERS

UNLOCK THE FULL POTENTIAL OF YOUR BOAT  
WITH OUR EXCELLENTLY ENGINEERED PROPELLERS.



All Suzuki propellers are designed specifically for your outboard to give outstanding performance for long reliable and trouble-free service.



# WATERGRIP

## ULTIMATE POWER DELIVERY



WATERGRIP is a new stainless-steel propeller series offering accurate response to your operation. With efficient conversion of engine power into propulsion, this propeller series ensures you a bigger, faster, stronger performance for your outboard.

\* This photo was taken by the remote control device.

### THE NEW WATERGRIP RANGE

**WATERGRIP**  
DF150A-300AP

**WATERGRIP**



The WATERGRIP series will be the new standard for Suzuki propeller. The new interchangeable and square shared bush system is designed not only to be replaced easily and quickly when required, but also to accurately and efficiently convert power from the engine to thrust through the propeller.

**WATERGRIP DUAL**  
DF300B/DF325A/DF350A

**WATERGRIP**  
DUAL



New flagship models, the DF300B, DF325A, and DF350A introduced the Suzuki Dual Propeller System, an industry-leading technology that is truly a revolution in innovation. Big engines demand more efficient conversion of engine output into propulsion. With two contra-rotating propellers operating simultaneously, the conversion efficiency becomes greater as does stability, grip and manoeuvrability.

THE  
**ULTIMATE**  
OUTBOARD MOTOR

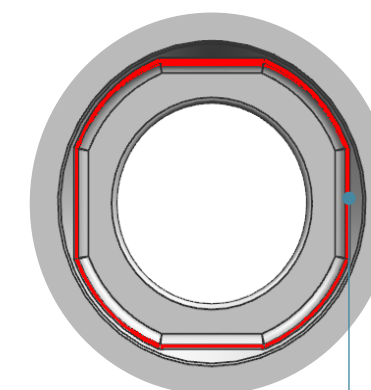
**WATERGRIP SPORT**  
DF150A-300AP

**WATERGRIP**  
SPORT



In addition to ease of maintenance and efficiency of power conversion, the WATERGRIP SPORT propellers feature a high rake blade design, which delivers excellent acceleration and exceptional top speed. These propellers are ideal for lightweight sport boats as they give remarkably stable thrust when turning which lead to superior maneuverability and ensure your exciting boating.

### PROPELLER BUSH ADVANTAGES



- ✓ Better resistance over propeller slip
- ✓ Interchangeable bush



PROPELLER RANGE

MODEL	TYPE	MATERIAL	BLADE	DIAMETER		PITCH		ROTATION*	DESCRIPTION	PART NUMBER
				in	mm	in	mm			
DF2.5	A520	Aluminum	3	7 3/8	187.3	5 3/8	136.5	RR		58110-97JA0-019
DF4A	C601	Aluminum	3	7 1/2	190.5	6	152.4	RR		58110-91JL0-019
DF5A	C611	Aluminum	3	7 1/2	190.5	6 1/2	165.1	RR		58110-91JM0-019
DF6A	C701	Aluminum	3	7 1/2	190.5	7	177.8	RR		58110-91JN0-019
DF8A DF9.9A	M701	Aluminum	3	9 1/4	235	7	177.8	RR		58100-89L00-019
	M821	Aluminum	3	9 1/4	235	8	203.2	RR	THICK	58100-90L40-019
	M901	Aluminum	3	9 1/4	235	9	228.6	RR		58100-89L20-019
	M911	Aluminum	3	9 1/4	235	9	228.6	RR	THICK	58100-90L50-019
	M1001	Aluminum	3	9 1/4	235	10	254	RR		58100-89L60-019
	M1011	Aluminum	3	9 1/4	235	10	254	RR	THICK	58100-90L21-019
	M1101	Aluminum	3	9 1/4	235	11	279.4	RR		58100-89L70-019
DF9.9B		Aluminum	4	10	254	5	127	RR	High thrust	58100-94JA1-019
DF15A		Aluminum	4	10	254	7	177.8	RR	High thrust	58100-94JB0-019
DF20A		Aluminum	3	9 1/4	235	7	177.8	RR		58100-89L00-019
DT9.9A DT15A		Aluminum	3	9 1/4	235	9	228.6	RR		58100-89L20-019
		Aluminum	3	9 1/4	235	9	228.6	RR	THICK	58100-90L50-019
		Aluminum	3	9 1/4	235	10	254	RR		58100-89L60-019
		Aluminum	3	9 1/4	235	10	254	RR	THICK	58100-90L60-019
		Aluminum	3	9 1/4	235	11	279.4	RR		58100-89L70-019
		Aluminum	3	9 1/4	235	12	304.8	RR		58100-89L50-019
DF25A	P911	Aluminum	3	10 1/4	260.3	9	228.6	RR	THICK	58100-96372-019
DF30A	P1001	Aluminum	3	10 1/4	260.3	10	254	RR		58100-91L40-019
DT25 DT30	P1011	Aluminum	3	10 1/4	260.3	10	254	RR	THICK	58100-96472-019
	P1101	Aluminum	3	10 1/4	260.3	11	279.4	RR		58100-91L50-019
	P1201	Aluminum	3	10 1/4	260.3	12	304.8	RR		58100-91L20-019
	P1211	Aluminum	3	10 1/4	260.3	12	304.8	RR	THICK	58100-96482-019
	P1301	Aluminum	3	10 1/4	260.3	13	330.2	RR		58100-91L30-019
	P1311	Aluminum	3	10 1/4	260.3	13	330.2	RR	THICK	58100-96492-019
	P1401	Aluminum	3	10 1/4	260.3	14	355.6	RR		58100-95D01-019
	P1501	Aluminum	3	10 1/4	260.3	15	381	RR		58100-96462-019
DF40A	S900	Aluminum	3	11 1/2	292.1	9	228.6	RR		58100-88L03-019
DF50A	S1000	Aluminum	3	11 1/2	292.1	10	254	RR		58100-88L13-019
DF60A	S1100	Aluminum	3	11 1/2	292.1	11	279.4	RR		58100-88L23-019
DT40	S1200	Aluminum	3	11 5/8	295.3	12	304.8	RR		58100-88LA0-019
	S1301	Aluminum	3	11 1/2	292.1	13	330.2	RR		58100-88LB0-019
	S1400	Aluminum	3	11 3/8	288.9	14	355.6	RR		58100-88L52-019
	S1500	Aluminum	3	11 1/4	285.8	15	381	RR		58100-88L62-019
	S1600	Aluminum	3	11 1/8	282.6	16	406.4	RR		58100-88L72-019
	S1700	Aluminum	3	11	279.4	17	431.8	RR		58100-88L83-019
	SS1600	Stainless	3	11 1/8	282.6	16	406.4	RR		58200-88L30-000
DF50AV		Aluminum	3	14	355.6	9	228.6	RR		58100-87LG1-019
DF60AV		Aluminum	3	14	355.6	11	279.4	RR		58100-87LH0-019
		Aluminum	3	13 3/4	349.3	12	304.8	RR		58100-87LJ0-019
		Aluminum	3	14	355.6	13	330.2	RR		58100-87LA0-019
		Aluminum	3	13 7/8	352.4	15	381	RR		58100-87LB0-019
		Aluminum	3	13 3/4	349.3	17	431.8	RR		58100-87LC0-019
DF70A		Aluminum	3	14	355.6	13	330.2	RR		58100-87LA0-019
DF80A		Aluminum	3	13 7/8	352.4	15	381	RR		58100-87LB0-019
DF90A		Aluminum	3	13 3/4	349.3	17	431.8	RR		58100-87LC0-019
DF100B		Aluminum	3	13 3/4	349.3	19	482.6	RR		58100-87LD0-019
		Aluminum	3	13 3/4	349.3	21	533.4	RR		58100-87LE0-019
		Aluminum	3	13 3/4	349.3	23	584.2	RR		58100-87LF0-019
		Aluminum	3	13 1/2	342.9	15	381	RR		58100-90JE0-019
		Aluminum	3	14	355.6	17	431.8	RR		58100-90JA0-019
		Aluminum	3	14	355.6	19	482.6	RR		58100-90JB0-019
		Aluminum	3	14	355.6	21	533.4	RR		58100-90JC0-019
		Aluminum	3	14	355.6	23	584.2	RR		58100-90JD0-019
		Stainless	3	13 7/8	352.4	15	381	RR		58200-92J40-000
		Stainless	3	13 7/8	352.4	17	431.8	RR		58200-92J50-000
		Stainless	3	13 7/8	352.4	19	482.6	RR		58200-92J60-000
		Stainless	3	13 7/8	352.4	21	533.4	RR		58200-92J70-000
		Stainless	3	13 7/8	352.4	23	584.2	RR		58200-92J80-000
		Stainless	3	13 7/8	352.4	25	635	RR		58200-92J90-000

\*RR:Regular-Rotation model, CR:Counter-Rotation model



MODEL	TYPE	MATERIAL	BLADE	DIAMETER		PITCH		ROTATION*	DESCRIPTION	PART NUMBER
				in	mm	in	mm			
DF100A		Aluminum	3	13 1/2	342.9	15	381	RR		58100-90JE0-019
DF115A		Aluminum	3	14	355.6	17	431.8	RR		58100-90JA0-019
DF115BG		Aluminum	3	14	355.6	19	482.6	RR		58100-90JB0-019
DF140A		Aluminum	3	14	355.6	21	533.4	RR		58100-90JC0-019
DF140BG		Aluminum	3	14	355.6	23	584.2	RR		58100-90JD0-019
		Stainless	3	13 7/8	352.4	15	381	RR		58200-92J40-000
		Stainless	3	13 7/8	352.4	17	431.8	RR		58200-92J50-000
		Stainless	3	13 7/8	352.4	19	482.6	RR		58200-92J60-000
		Stainless	3	13 7/8	352.4	21	533.4	RR		58200-92J70-000
		Stainless	3	13 7/8	352.4	23	584.2	RR		58200-92J80-000
		Stainless	3	13 7/8	352.4	25	635	RR		58200-92J90-000
		Stainless	3	13 7/8	352.4	17	431.8	CR		58200-92JA0-000
		Stainless	3	13 7/8	352.4	19	482.6	CR		58200-92JB0-000
		Stainless	3	13 7/8	352.4	21	533.4	CR		58200-92JC0-000
		Stainless	3	13 7/8	352.4	23	584.2	CR		58200-92JD0-000
DF150A	Watergrip	Stainless	3	16	406.4	15	381	RR		58700-93L80-000
DF150AP	Watergrip	Stainless	3	16	406.4	17	431.8	RR		58700-93L00-000
DF175A	Watergrip	Stainless	3	16	406.4	18 1/2	469.9	RR		58700-93L10-000
DF175AP	Watergrip	Stainless	3	16	406.4	20	508	RR		58700-93L20-000
DF200	Watergrip	Stainless	3	16	406.4	21 1/2	546.1	RR		58700-93L30-000
DF200A	Watergrip	Stainless	3	16	406.4	23	584.2	RR		58700-93L40-000
DF200AP	Watergrip	Stainless	3	16	406.4	24 1/2	622.3	RR		58700-93L50-000
DF225	Watergrip	Stainless	3	16	406.4	26	660.4	RR		58700-93L60-000
DF250	Watergrip	Stainless	3	16	406.4	27 1/2	698.5	RR		58700-93L70-000
DF250AP	Watergrip	Stainless	3	16	406.4	17	431.8	CR		58800-93L00-000
DF300AP	Watergrip	Stainless	3	16	406.4	18 1/2	469.9	CR		58800-93L10-000
	Watergrip	Stainless	3	16	406.4	20	508	CR		58800-93L20-000
	Watergrip	Stainless	3	16	406.4	21 1/2	546.1	CR		58800-93L30-000
	Watergrip	Stainless	3	16	406.4	23	584.2	CR		58800-93L40-000
	Watergrip	Stainless	3	16	406.4	24 1/2	622.3	CR		58800-93L50-000
	Watergrip	Stainless	3	16	406.4	26	660.4	CR		58800-93L60-000
	Watergrip	Stainless	3	15 1/2	393.7	17	431.8	RR		58700-96J00-000
	Watergrip	Stainless	3	15 1/4	387.4	19	482.6	RR		58700-96J10-000
	Watergrip	Stainless	3	15	381	21	533.4	RR		58700-96J20-000
	Watergrip	Stainless	3	14 3/4	374.7	23	584.2	RR		58700-96J30-000
	Watergrip	Stainless	3	14 1/2	368.3	25	635	RR		58700-96J40-000
	Watergrip	Stainless	3	14 1/2	368.3	27	685.8	RR		58700-96J50-000
	Watergrip	Stainless	3	15 1/2	393.7	17	431.8	CR		58800-96J00-000
	Watergrip	Stainless	3	15 1/4	387.4	19	482.6	CR		58800-96J10-000
	Watergrip	Stainless	3	15	381	21	533.4	CR		58800-96J20-000
	Watergrip	Stainless	3	14 3/4	374.7	23	584.2	CR		58800-96J30-000
	Watergrip	Stainless	3	14 1/2	368.3	25	635	CR		58800-96J40-000
	Watergrip	Stainless	3	14 1/2	368.3	27	685.8	CR		58800-96J50-000
	Watergrip	Stainless	4	15 1/4	387.4	18	457.2	RR		58700-93J00-000
	Watergrip	Stainless	4	15 1/4	387.4	20	508	RR		58700-93J10-000
	Watergrip	Stainless	4	15 1/4	387.4	22	558.8	RR		58700-93J20-000
	Watergrip	Stainless	4	15 1/4	387.4	24	609.6	RR		58700-93J30-000
	Watergrip	Stainless	4	15 1/4	387.4	26	660.4	RR		58700-93J40-000
	Watergrip	Stainless	4	15 1/4	387.4	20	508	CR		58800-93



# CARE AND MAINTENANCE ITEMS SUZUKI COLLECTION

KEEP YOUR SUZUKI 100% SUZUKI

Regular maintenance is essential to keep your outboard running smoothly and reliably. Different components require maintenance or replacement at different intervals. We integrate our unique technologies and customer insight to create and deliver a variety of superior protections for your outboard.



# GENUINE OIL & CHEMICAL

## EMPOWERING YOUR OUTBOARDS TO PEAK PERFORMANCE



In the 1980's, Suzuki started the development of lubricants in pursuit of the ultimate performance. The lubricant is named "ECSTAR" as it is our guiding "STAR" towards an "ECSTATIC" performance. As the expectation towards our product evolve, the same attention to performance is required for durability and environmental protection. With the high technology cultivated through its long history and dedicated engineering, Suzuki has precisely reformulated "ECSTAR" to satisfy and exceed these requirements.

By enhancing and drawing out the best performance - ECSTAR will give you a Suzuki experience that others could not!

THE  
**ULTIMATE**  
OUTBOARD MOTOR

### PRODUCT LINE-UP

#### ENGINE OIL

ECSTAR V7000  
10W-40  
SEMI SYNTHETIC



ECSTAR V5000  
10W-40  
MINERAL



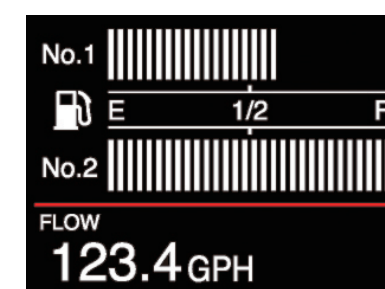
#### GEAR OIL

ECSTAR  
OBM GEAR OIL



\* Availability may differ in some regions. Please contact your local Authorized Suzuki dealers for more details.

### KEY FEATURES



#### Fuel Savings

The Genuine Formulation provides the high performance and help to improve fuel economy.



#### Outstanding Engine Protection

The innovative lubricating technology achieves thermal stability, which contributes to the ultimate engine protection even when starting engine in cold climates.



#### Clean Engine for Longer Life

Cleaning performance helps to prolong the engine life.



# SUZUKI COLLECTION

## MAXIMIZING YOUR EXCITEMENT!



Going through a long history, whatever fields we contribute, SUZUKI strives to bring to worldwide customer not only the excellent performance products but also the variety of merchandises and goods. Never compromise on effort to ensure Suzuki fans a vivid life, never stop creating Suzuki style day by day!

## ENJOY SUZUKI COLLECTION

For a full range of line-up, please contact your local Authorized Suzuki dealers.

THE  
ULTIMATE  
OUTBOARD MOTOR



ECSTAR Bear (White/Blue) H150mm\*W140mm\*D130mm



DF350A Rubber Key Ring  
H60mm\*W28mm\*D11mm



ECSTAR Towel (White/Blue) H400mm\*W1,100mm



ECSTAR Bear Key Ring (White/Blue)  
H60mm\*W28mm\*D11mm



ECSTAR One Touch  
Thermo Bottle (480ml)  
H235mm\*W66mm\*D66mm



ECSTAR Yunomi  
H105mm\*W73mm\*D73mm




ECSTAR Folding Fan  
H225mm\*W25mm\*D10mm



# UTILITY EQUIPMENT

ALL YOU NEED IS SUZUKI GENUINE ITEMS



Our utility equipment range makes it easy to customise your outboard to suit your individual boating needs and preferences. You have a huge choice of options, from integrated tiller handles, steering extension and extra fuel line systems to flush hose attachments, engine covers and rigging tube - All designed and manufactured specifically for our outboard and engineering standard.



## WATER SEPARATOR / FUEL FILTER



**NEW**

Available with 2 types.  
Type 1: Applicable for  
DF5A-DF140A/  
DT9.9A-DT40  
Type 2: Applicable for  
DF150A-DF350A

## WATER SEPARATOR / FUEL FILTER ELEMENT SET



**NEW**

## SUZUKI GENUINE FUEL TANK ADAPTER

Applicable for Suzuki Multi-Function  
Display, Suzuki Multi-Function Gauge

**NEW**



## FUEL TANK



## FUEL HOSE



## ENGINE COVER



## RIGGING TUBE



## SAFETY CORD



## INTEGRATED MULTI-FUNCTION TILLER HANDLE KIT



The integrated Multi-Function Tiller Handle Kit utilises the functions that are essential for your drive. Tachometer, warning indicator, Troll Mode switch, power trim and grip friction adjuster together with normal tiller handle function.



Tachometer with  
warning indicators



Troll mode switch  
activates Suzuki Troll  
Mode System and  
controls RPM from idling  
engine speed up to  
1200rpm at every 50rpm

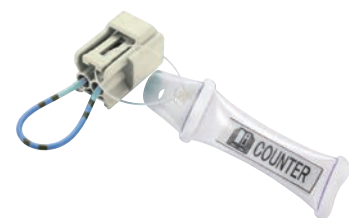


Three-position  
angle adjustable  
bracket

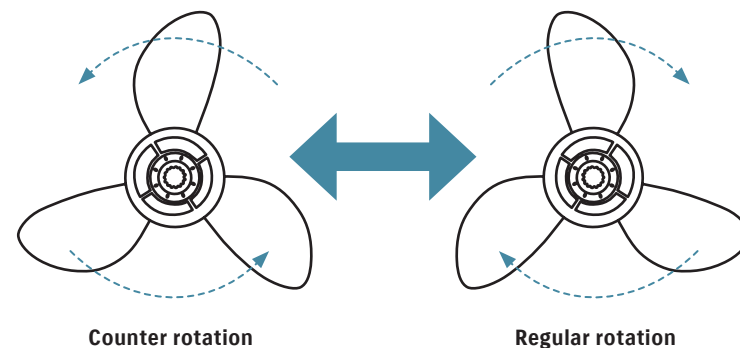


Power trim and  
tilt switch and  
throttle grip  
friction adjuster

## SUZUKI SELECTIVE ROTATION



CONVERTS DF150AP/175AP/200AP/250AP/300AP  
TO COUNTER ROTATION SPECIFICATION



## SELECTIVE ROTATION CONNECTOR

If you have a large boat with two engines, you generally need to pair a standard rotation outboard with a counter rotation model. Our Suzuki Selective Rotation system allows you to select the rotation direction on Suzuki outboards. So instead of buying a dedicated counter rotation model, all you need is a standard outboard, a suitable propeller, and our simple Selective Rotation Connector.

## RECOMMENDED STEERING KITS

### STEERING SYSTEM / JOYSTICK

Order taking, delivery, technical support and warranty for these products are handled by SeaStar Solutions. Please consult your local SeaStar Solutions distributor or dealer if you need more detail for product information, price, availability and all business terms.

## STEERING KIT

### BAYSTAR



#### BAYSTAR

BAYSTAR OUTBOARD SYSTEM - HK4200A-3			
System comprises:			
BayStar Helm 1.4cu" (22.94cc)		HH4314-3	
BayStar Compact Cylinder		HC4645-3*	
20ft(6096mm) "cut to length" tubing kit		HT4420H	
2 x litre SeaStar hydraulic oil		HA5430	

\* Note: 115-140hp (85.8 kw - 104.4 kw) four stroke 2001 to current model require HC4658H.

### BAYSTAR PLUS



#### BAYSTAR PLUS

BAYSTAR OUTBOARD SYSTEM - HK4500A-3			
System comprises:			
BayStar Plus Helm 1.4cu" (22.94cc)		HH4514-3	
BayStar Compact Cylinder		HC4645-3*	
2 x litre SeaStar hydraulic oil		HA5430	

\* Note: 115-140hp (85.8 kw - 104.4 kw) four stroke 2001 to current model require HC4658H.

### SEASTAR



#### SEASTAR

SEASTAR OUTBOARD SYSTEM - HK6400-3			
System comprises:			
SeaStar Helm 1.7cu" (27.80cc)		HH5271-3	
SeaStar Pivot Cylinder		HC5345-3*	
2 x litre SeaStar hydraulic oil		HA5430	

\* Note: 115-140hp (85.8 kw - 104.4 kw) 1996 only requires HC5348, 40-140hp (29.4 kw - 101.4 kw) four stroke 1998 to current model and 90hp (67.1 kw) four stroke 2003 to current model require HC5358.

### SEASTAR



#### SEASTAR POWER ASSIST

SEASTAR OUTBOARD POWER ASSIST SYSTEM			
System comprises:			
SeaStar Helm 1.7cu" (27.80cc)		HH5271-3	
SeaStar Pivot Cylinder		HC5345-3*	
2 x litre SeaStar hydraulic oil		HA5430	
SeaStar 12v Power Assist Unit		PA1200-2	

\* Note: 115-140hp (85.8 kw - 104.4 kw) 1996 only requires HC5348, 40-140hp (29.4 kw - 101.4 kw) four stroke 1998 to current model and 90hp (67.1 kw) four stroke 2003 to current model require HC5358.

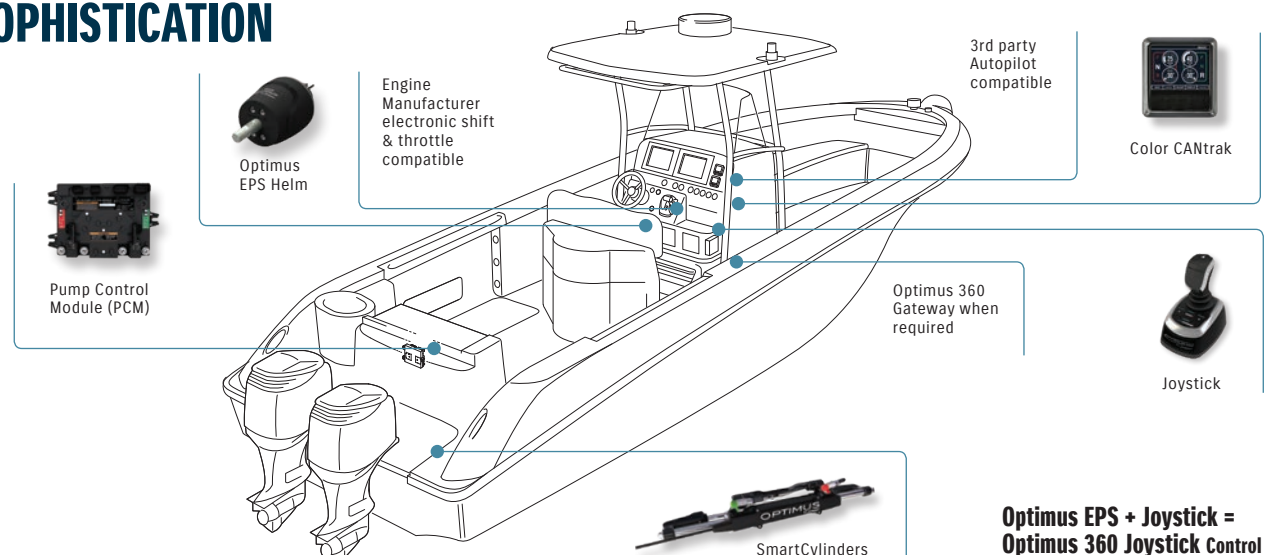
### SEASTAR



#### TOURNAMENT CYLINDER AND ADJUSTABLE TIE BAR

CONFIGURATION	CYLINDER		HARDWARE KIT		TIE BAR	
	PART NO.	QTY.	PART NO.	QTY.	PART NO.	QTY.
Twin Engine - Single Cylinder (STBD)	HC6845	1	HA6802	1	HO6821	1
					HO6822	1
					HO6823	1
					HO6820	1
Twin Engine - Dual Cylinder	HC6845	2	HA6804	1	HO6821	1
					HO6822	1
					HO6823	1
					HO6820	1

## A HIGHER LEVEL OF ENGINEERING SOPHISTICATION





## APPLICATION CHART

[illegible][illegible]

		DF90A	DF70A	DF60A		DF60AV	DF50A		DF50AV	DF40A	DF30A			DF25A			DF20A		DF15A
ITEM	Applicable for Tiller Handle	DF90ATH	DF70ATH	DF60ATH	DF60AQH	DF60AVTH	DF50ATH	DF50AQH	DF50AVTH	DF40AQH	DF40ATH	DF30AQH	DF25A	DF25ATH	DF25AQH	DF20A	DF20ATH	DF15A	DF15ATH
STEERING																			
REMOTE CONTROL ATTACHING KIT												✓	✓	✓	✓	✓	✓	✓	✓
STEERING-BRACKET ATTACHMENT		✓	✓	✓	✓	✓	✓	✓	✓	✓	✓	✓	✓	✓	✓	✓	✓	✓	✓
ELECTRICAL PARTS																			
ELECTRIC STARTER KIT (Only For MZ Type)											✓		✓	✓		✓	✓		✓
BATTERY CHARGING KIT (Only For MZ Type)											✓		✓	✓		✓	✓		✓
RECTIFIER SET (Only For MZ Type)											✓		✓	✓		✓	✓		✓
RECEPTACLE KIT (Only For MZ Type)												✓		✓	✓		✓		✓

[illegible]